

2010 Atomic Grow Research Update



Farmers report: *Atomic Grow* gives you these benefits:

Drought protection Save 10 to 20 bu. more corn and soybean yield in dry-weather stress. In an ideal season on prime soil, 2009 research shows typical yield benefits of 1.7 to 3.3 bu. on soybeans, 3.8 to 9.5 bu. on corn.

Fast, uniform stands Our “nanotech” surfactant improves moisture absorption for faster germination and emergence. *Result: Deeper, healthier roots all season!*

New NPK efficiency Faster nutrient transport into crops raises yield per unit of fertilizer — foliar *or* soil-applied.

Lodging resistance Massive roots and thicker stalks resist lodging in wind and late-season bad weather. *You save more yield when it's worth the most!*

Higher crop quality Healthy crops produce higher test-weight grain, which matures earlier with less moisture. Fruit and vegetables typically have higher sugars and nutrients for frost resistance before harvest, plus more consumer taste appeal and storage life.

Help for herbicides Atomic Grow’s nano-sized colloids help transport herbicides into leaves — and throughout weeds — for more complete kill of resistant weeds. Farmers also tell us *soybeans and corn rebound faster* after temporary stress of glyphosate application.



Atomic Grow is a biobased, non-toxic “nano-technology” formulation to clean our environment and improve efficiency of crop moisture and nutrients — especially under stress of dry weather or low-organic soils. **Atomic Grow products are made with food additives on the U.S. Food and Drug Administration’s EAFUS list of “Everything Added to Food in the United States.”** Our products support Clean Water Act farm approval certification. It is approved by the Florida Department of Environmental Protection as safe for groundwater and soil remediation.

For information please Email Jim Shellenback at atomicgrow@gmail.com or call 321-557-6219

Corn *We've known since 2007 that Atomic Grow helps corn yields come through in a dry year. In 2010, we learned that on average, it pays its way even in a wet, cool season.*

In 2007-08, Southeastern corn growers who encountered dry weather in June or July typically gained 10 to 15 bu. higher yields in corn with **Atomic Grow**.

Then in 2009, farmers across the Corn Belt tested it — during a cool, wet season when deep rooting with **Atomic Grow** wasn't as critical for overcoming dry-weather stress. Here's what they learned:

Ohio, Indiana, Illinois: One of our distributors, GreenYields of Ohio, retained research agronomist Steve Wolf of S&R Consulting, Atlanta, IN to test **Atomic Grow** in 2009. Wolf weighed corn yields at 11 locations in Ohio, Indiana and Illinois. Each location had three random plots plus a control plot. **Atomic Grow**-treated corn outyielded control plots by an average 9.5 bu. per acre (chart at right).

In separate trials at six Midwest locations, corn which Wolf treated with an experimental "**Atomic Grow II**" formula outyielded controls by 15.2 bu. per acre. **Atomic Grow** plots averaged 197.7 bu. per acre. This product will be tested in 2010 and may be released in 2011.

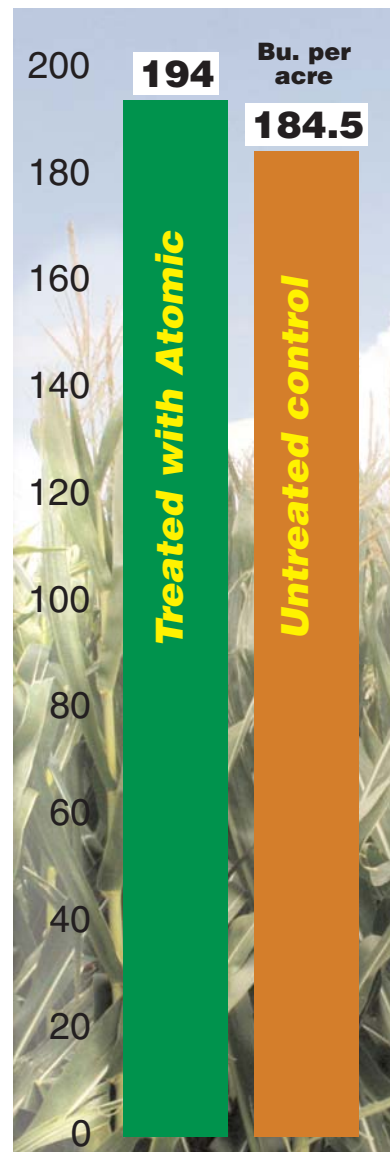
Iowa: In 27 paired trials across Iowa using the Practical Farmers of Iowa random-strip field strip protocol, the average corn yield gain was 3.84 bu. for 8 ounces of

Atomic Grow per acre. That yield gain was statistically significant above the 99% confidence level. Early application (V2 to V3) led to the best yield response.



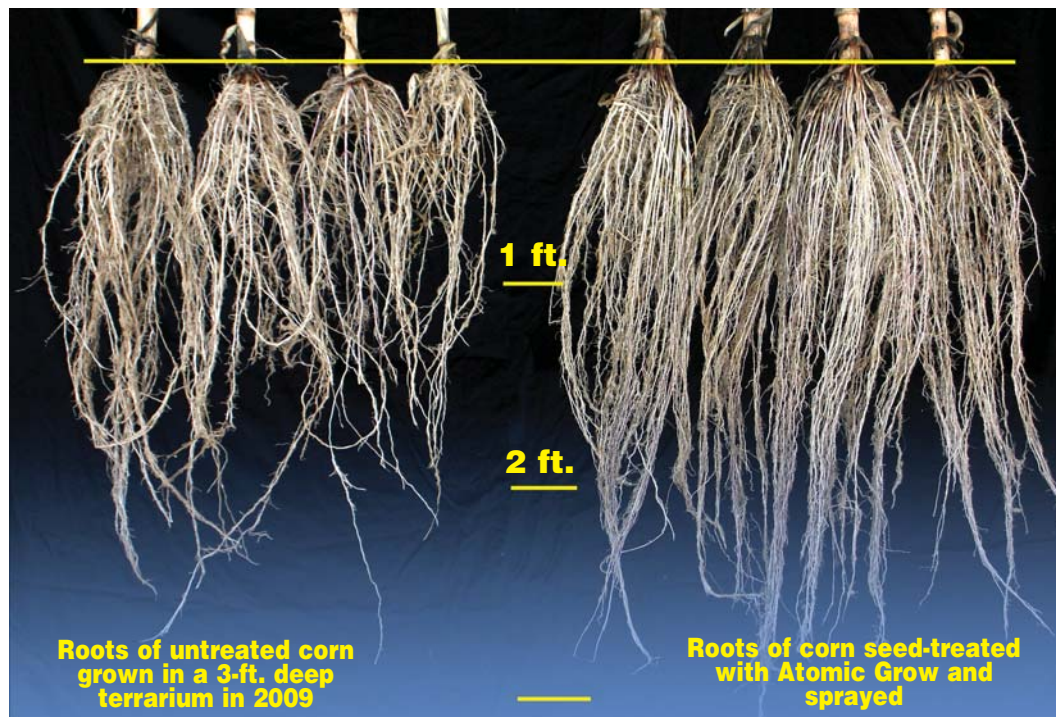
A 2009 corn yield trial by Dr. Bertel Schou at ACRES Agricultural Custom Research, Cedar Falls, IA resulted in a 4.3 bu. yield gain when the planter dribbled a solution of Atomic Grow into the seed furrow. We'll study this more in 2010.

We're also testing **Atomic Grow** to measure how well it enhances the yield effects of foliar and planter-applied fertilizers on corn. In 2009, field trials with 2x2 starter showed that corn roots quickly grew toward the band of fertilizer, then plunged deep. Atomic Grow apparently improved soil capillary movement of moisture and nitrogen. We'll have yield trials in 2010 to measure the benefit. Let us know if you'd like to participate.



The 9.5-bu. average corn yield gain shown in the chart above comes from 33 treated plots and 11 control plots in Ohio, Indiana and Illinois. Research agronomist Steve Wolf applied 8 oz. per acre of Atomic Grow on each 4-row plot. The 9.5-bu. difference showed up in the data though all plot yields were high, and the season was cool with abundant moisture.

Growers also tell us that treated corn often has a percentage point or two less moisture at harvest, plus a pound or two higher test weight. We found this true in Iowa strip trials. In four replicated strips, yield was about the same, 194 bu. per acre, but Atomic Grow-treated corn samples consistently had 1 lb. higher test weight. That indicates higher nutrient density. These four reps were averaged in with 23 others, and the average of all 27 strips showed a 3.84 bu. benefit for applying Atomic Grow.



Untreated corn (above) was grown in a terrarium with the same soil as the treated corn. These roots are adequate in a season with good soil moisture. The biggest yield differences between untreated and treated crops typically show up after dry-weather stress.

Roots of corn treated with Atomic Grow (above) are 50% more massive, with roots reaching almost 3 ft. deep. A North Carolina State U. corn plot trial by agronomist Ron Heiniger in 2009 found a 14-bu. gain with two Atomic Grow treatments under dry-weather conditions.

Soybeans

In an ideal season, trials show average yield gains of 1.7 to 3.3 bu. per acre. Under heat stress, farmers report up to 28 bu. benefit.

In a Midwest season like 2009 with lots of rain and little heat stress, 8 oz. of Atomic Grow applied at the first two trifoliolate leaf stage may give you only a bushel or two of yield benefit on soybeans. That's enough to pay for the Atomic Grow.

You also get "stress insurance" and other benefits which farmers report to us, such as less lodging, healthier beans and heavier test weight. *Yield data from 2009:*

Iowa: Average yield gain for Atomic Grow on 32 paired-strip trials was 1.73 bushels. This was at good yield levels: 57.70 bu. (treated) and 55.97 bu. (untreated). It was statistically significant beyond the 99% confidence level.

A "terrarium" experiment by our Iowa distributor is an example of drought resistance (see photos at right).

Ohio, Indiana and Illinois: Plot trials by an independent research agronomist at six locations showed a 3.3-bu. yield gain for Atomic Grow on soybeans (Please see chart at right). This occurred at yield levels above 50 bu. in favorable weather.

South and Southwest: As in 2007-08, Atomic Grow showed larger yield benefits where heat or moisture shortages made bigger roots vital as "stress insur-

ance." See the photo and caption below reporting Blake Williams' experience.

North Carolina: We appreciate research by our friends in Extension and at NC State. One of their 2009 plot trials compared 8 oz. of Atomic Grow per acre applied at V2 against a humate product applied at the same growth stage. Atomic Grow had a 27% yield advantage. In 2010, we're looking for researchers to test how Atomic Grow can enhance benefits of foliar-applied nutrients in tank mixes!



A three-week warm, dry stretch in late August and early September stressed the untreated soybeans at left. They're in a soil-filled box 12 in. wide, 3 ft. deep and 5 ft. long. On the same day (Sept. 13, 2009) when both of these photos were taken, Atomic Grow-treated beans had not wilted. Both had identical soil fertility and moisture. Treated beans had deeper roots, like the corn roots grown in this terrarium and shown on page 2.

Thicker soybean stalks, deeper rooting. In 2009, heavy and persistent fall rains prevented many North Carolina farmers from harvesting beans until December or later. These soybeans held by distributor Steve Mosely (photo, left) were treated with 8 oz. of Atomic Grow. They have massive stalks and deep roots. Beans didn't lodge or become moldy in spite of a soggy fall. The owner, Allen Warren, harvested over 50 bu. per acre from this field, one of the highest soybean yields he has had from this very sandy land.

Allen's cotton in an adjoining field also had thick stalks — and more cotton per acre than he had ever raised on that field (See page 7). We attribute massive stalks and roots to early Atomic Grow application and enhanced nutrient transport within the plant. The early root exudates stimulate soil organisms, which improve the root rhizosphere and make more soil nutrients available to the crop.

Beans treated with Atomic Grow in Red River County, TX yielded 48 bu. per acre in a high-stress season. Blake Williams shot this photo of treated soybeans July 27, 2009. Untreated beans in an adjoining field were about 10 inches shorter on the same date. Blake's untreated beans yielded just 20 bu. per acre — 28 bu. less than this treated half of the field. Asgro 4546 beans were planted April 23. Heavy rains followed. Then, reports Blake: "All through June, we had no rain. We had 13 days in June where the heat index was over 110 degrees. The rains started again July 4."

This is an example of substantial yield differences which farmers report after hot or dry stress hits their crops during vegetative and seed set stages.

Farmers tell us Atomic Grow helps speed maturity. Growers also report that a spray of Atomic Grow on the day of a predicted overnight frost offers crops a degree or two of freeze protection. Atomic Grow's "nanotech" physics somehow reduces cell-freezing damage.



Our distributor for Indiana, Ohio and Illinois retained independent research agronomist Steve Wolf of S&R Consulting, Atlanta, IN to conduct plot trials of Atomic Grow on soybeans at six locations in those three states in 2009.

Each location had three random-rep plots plus one control plot. Atomic Grow-treated soybeans outyielded control plots by an average 3.3 bu. per acre.

Here are other field observations from Midwest soybean growers in 2008-09:

- ✓ Higher average leaf sugar levels. Double-cropped beans in Michigan averaged 12.2 brix vs. 10.2 brix for untreated beans with three treatments. An Iowa grower who treated once found an average 8.5% higher leaf brix levels.

- ✓ Darker green, healthier soybeans. Growers who encountered stretches of dry, warm days reported that Atomic Grow-treated soybeans had a deeper shade of green, and resisted wilting longer than untreated beans.

Wheat, barley, oats Small grains respond with improved yield, lodging resistance and health



This wheatfield on Freddie Doub's farm, and others like it in North Carolina, convinced hundreds of producers in 2008 that Atomic Grow has a beneficial effect on crop health and yields by building massive roots and vigorous nutrient circulation. With Atomic Grow, North Carolina producers found they could raise 90 bu. to more than 100 bu. wheat where they had never seen 70 bu. before.

Wayne Smitherman reported: "We're having the best yields we've ever had. It's beautiful grain. Yields are 90-plus bushels; test weights 63 to 64 pounds. It was not overdone with fertilizer; just cow manure and a little nitrogen. We applied one spray of Atomic Grow with top-dressed liquid nitrogen."

Freddie Doub said in a videotaped interview: "We're not used to seeing wheat like this with a 5-inch head and four rows of grain in most of the heads. Wheat straw yield was double what we're used to."

Wheat growers in the Midwest and High Plains saw modest yield differences between treated and untreated wheat in 2009 on higher fertility soils and abundant moisture. A Minnesota distributor tested Atomic Grow tank-mixed with a liquid foliar treatment containing humates and sugar on a neighbor's wheat, spraying a band diagonally across the field. "You could clearly see taller wheat in the sprayed strip," he reports. "When the combine cut into the treated strip, the yield monitor jumped from around 70 bu. to over 100 bushels."

In 2010, we'll be testing Atomic Grow to see if we can raise the yield effectiveness of foliar-applied fertilizers and micronutrients.



In a Black Hawk County, Iowa field trial with nine replications and precise weigh-wagon measurement, oats sprayed with Atomic Grow yielded 7.3% more than untreated control oats. Test weight of treated oats was 2 pounds per bushel higher than untreated oats, reports grower Jerry Carlson. There was no weather stress from planting until harvest. Southeastern growers have reported that they're seeing yields of oats 50% higher than they've ever grown.

A few on-farm reports from 2009-season wheat growers around the nation:

✓ A Deering, ND grower treated spring wheat with Atomic Grow in 2009 strip trials. He reported 8 bu. more than the control in one trial. In a second strip where he used a higher application rate, the gain was 13 bushels.

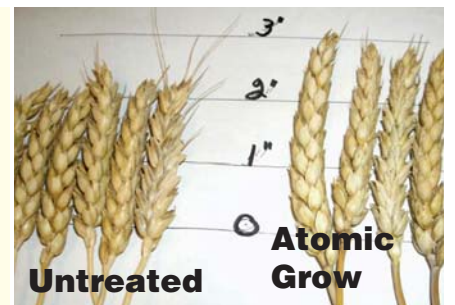
✓ Under severe drought, a Montana grower raising spring wheat had average protein content of 18.1% on 1,000 acres treated with Atomic Grow. His 6,500 acres of untreated fields averaged 16.5% protein. A protein premium of 30¢ per bu. for each 1/4-point increase would pay this producer \$1.90 per bushel. On his drought-damaged yield of only 16 bu. per acre, that's a benefit of about \$30 per acre, about a 300% return on the cost of Atomic Grow.

✓ Tim Disher, northwestern NC, had *too much* rain in 2009. Most of the wheat in his area had head scab and low test weight. "A lot of farmers didn't get a wheat crop at all," he says. "My wheat yield wasn't great, but I had a crop. The test weight is what blows me away: 65 lbs. per bushel. I delivered some wheat on contract, and the broker told me he would buy *all* the wheat I had raised — plus they'd haul it from the farm. My wheat had stayed healthy all season — and free of head scab."



Barley growers in the Carolinas who applied Atomic Grow in 2009 reported yields 30% to 50% higher than they can recall growing. Although late rains delayed harvest, this field yielded close to 100 bushels.

Wheat heads picked at random June 30, 2009 in a Montgomery County, IA field show typical longer heads where spring wheat was sprayed at 2 to 3 inch height. In wheat trials with other varieties, we saw less yield response, but improved plant health and fungal resistance.



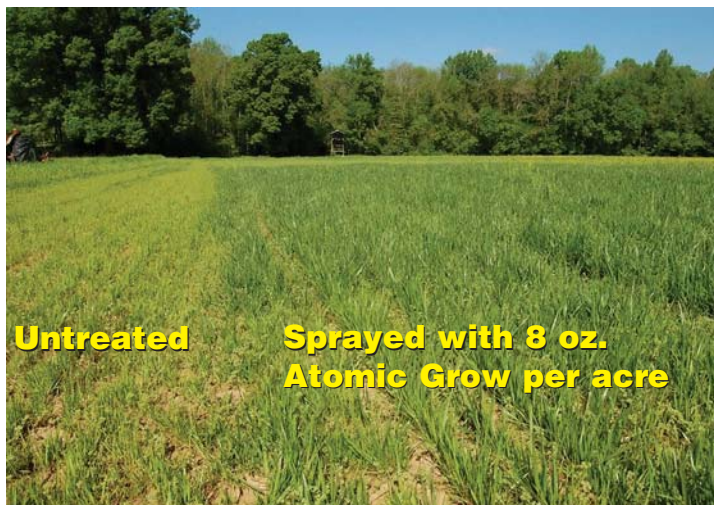
Forage

Dairy cows, beef cows and hay analysis will show you higher nutrient density with Atomic Grow treatment. Deeper rooting helps extend summer growth.

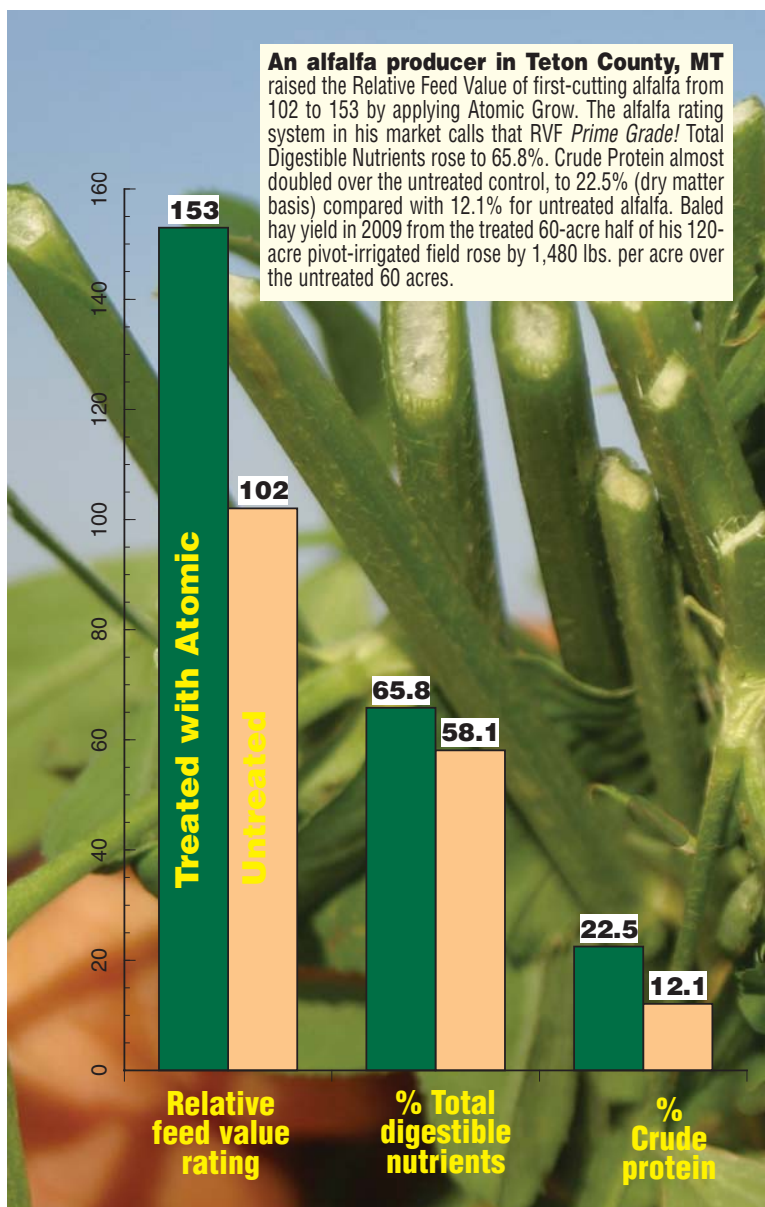
When you feed your own hay and pasture treated with Atomic Grow, you benefit three ways: Higher forage yield, higher quality feed, and improved herd health.

It all starts with deeper rooting. Crop consultant Jon Linker of North Carolina says, "You may not notice a lot of lush growth after spraying with Atomic Grow. But dig those roots, and you will see a difference between treated and untreated grass. And if your weather turns dry, you'll see a substantial difference in growth which can extend your haying and grazing season."

Linker says that some of his most-convinced clients are Southern golf course managers who need to keep fairways attractive all summer. "When they see how bentgrass treated with Atomic Grow stays green and healthy with less water and fertilizer, they're enthused," says Jon.



Bob Morgan, Forsyth County, NC sprayed Atomic Grow on his fall-planted fescue April 11, 2009 and shot this photo 25 days after spraying. He tells us: "I left a strip like you asked, so we could take pictures. We got 280 bales from the four acres. No doubt we would have gotten 400 bales if we had sprayed all of it."



An alfalfa producer in Teton County, MT raised the Relative Feed Value of first-cutting alfalfa from 102 to 153 by applying Atomic Grow. The alfalfa rating system in his market calls that RVF *Prime Grade!* Total Digestible Nutrients rose to 65.8%. Crude Protein almost doubled over the untreated control, to 22.5% (dry matter basis) compared with 12.1% for untreated alfalfa. Baled hay yield in 2009 from the treated 60-acre half of his 120-acre pivot-irrigated field rose by 1,480 lbs. per acre over the untreated 60 acres.



Mike Johnson saw orchardgrass and fescue hay hit 4 tons per acre after spraying with Atomic Grow. "It's not fertilizer," he says. "It just makes fertilizer work better." He also saw his cattle graze Atomic Grow-sprayed areas of his pasture first: "Maybe the treated grass tastes sweeter."

In a forage research demonstration, Atomic Grow-treated Coastal Bermuda at the Sunbelt Expo in Moultrie, GA was taller and more lush than Coastal in the unsprayed control plot.

Treated Coastal was higher in protein and also scored a Relative Feed Value of 84.87% versus 80.58% on the control plot. The samples at right are representative of Coastal in the display plots. A study of the roots would probably show even larger differences.



Various hay markets use differing standards to compute relative feed value, but all depend on high-quality fiber and highly digestible nutrients. When you mobilize nutrient transport with Atomic Grow, you get *higher nutrient density*.

Vegetables, fruit

Here's where high quality, taste and shelf life from Atomic Grow pay off with big profits!



1



2



3



4



5



6



7



8



9

Atomic Grow and vegetables go together like peas and carrots. Atomic Grow first caught on with the produce industry as a cleanser for fresh fruit and vegetables. Now, home gardeners and commercial growers are discovering how Atomic Grow enhances health, production and taste of fresh produce. A few examples:

1. Tomatoes blossom earlier and longer, with higher-brix fruit that keeps well, even when picked ripe.

2. Leafy vegetables like kale, cabbage and lettuce respond vigorously to repeated light sprays of Atomic Grow through the season.

3. Okra responds to Atomic Grow in big way. Jim Shellenback, Florida distributor for Atomic Grow, is 6 ft. tall, and Okra on a Brevard County farm is up to his shoulders.

4. Strawberries and Atomic Grow offer a special opportunity. North Carolina crop consultant Jon Linker has developed Atomic Grow plus nutrient foliar that stimulate bearing two weeks early and extend it two weeks later. For one grower in 2009, that added \$3,000 an acre to gross income. "We're constantly getting comments about the fantastic taste of strawberries sprayed weekly with Atomic Grow and our nutrient packages," says Linker.

5. Peppers and other succulent veggies grow firm, sweet and crisp. Blooming tends to extend late into summer.

6. What's so special about this butternut squash raised with Atomic Grow? It was harvested in Iowa in October 2009, and *it was still firm and fresh five months later* when this photo was taken. It was simply stored in a cool room all winter. Really high-brix produce usually doesn't rot; it just gradually dries in storage.

7. A rural legend is emerging about string beans sprayed with Atomic Grow. The joke is that gardeners finally pray for frost, because they're weary of picking, eating, freezing and giving away pole beans and bush beans. In this photo, farmer and master gardener G.L. Barringer of North Carolina shows that even after four hard freezes, some of his pole beans were still growing in late November 2009.

8. Raspberries and other berry bushes sprayed regularly bloom more profusely, attracting bees and multiplying yield. We don't know why, but Japanese beetles and other chewing insects tend to leave these bushes and fruit alone if you maintain a recurring spray program. Maybe it's the higher sugar levels.

9. Sweetcorn brix levels climb when growers apply Atomic grow. Florida growers are finding they can lift brix levels (dissolved sugars and other solids) to about 18, offering more consumer appeal than normal sweetcorn hybrids with brix readings of 13. Higher brix levels mean tastier sweetcorn and longer shelf life. Often, treated fields reached peak sugar levels earlier than untreated fields. Ears in treated fields often had 18 rows of kernels, compared to the 14 and 16 rows in untreated corn of the same hybrid. Stalks and roots were larger in treated fields.

Cotton *In cotton-raising climates, deep roots make a difference!*

Allen Warren of Stokes, NC reports: "My best-ever cotton yield on this sandy field (photo, right) had been just over 900 pounds. My 2009 yield was 1,260 pounds. I attribute much of that yield increase to healthy cotton and one treatment of 8 oz. per acre of Atomic Grow. A neighbor stopped last fall and told me, "I've never seen cotton that pretty on that sandy land."

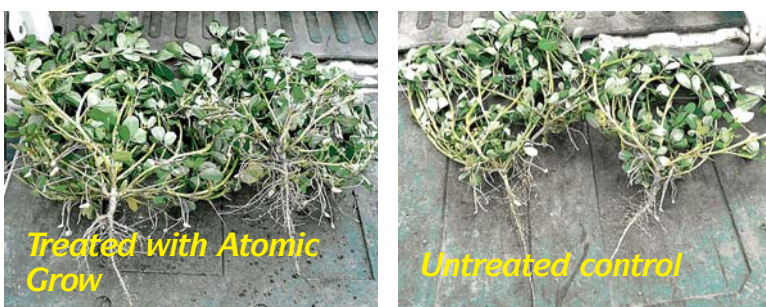
In the inset photo, Warren's friend Steve Mosely holds roots and stalks pulled from the field after cotton was harvested and stalks were shredded. Warren says the root structure was "at least 50% greater than I've seen on cotton raised on this sandy land in the past."



Peanuts *Atomic Grow accelerates nutrient transfer from leaves to roots. For peanuts, that means more pegs, more peanuts, and higher yield per acre.*

A North Carolina research agronomist who is studying Atomic Grow on peanuts e-mailed us the photos at right. He told us: "I saw little difference between treated and untreated peanuts above ground. But when I pulled representative plants, I was shocked. Treated plants had 21 to 24 pegs; untreated plants had about 9 or 10."

More pegs mean more peanut potential! We'll be working with peanut growers and researchers in 2010 to measure responses in yield and quality.



Tobacco *Quality is more crucial than ever for flue-cured and burley growers! Healthier plants enhance quality with our non-toxic, bio-based tobacco formulation.*

Tobacco growers who can't raise high-grade flue-cured and burley have a tough time getting contracts. Allen Warren and his sons (right) of Stokes, NC proved they can deliver quality burley with Atomic Grow in 2009.

Here's a summary of the Warren family's experience on 4.5 acres of tobacco they raised with only family labor:

1. **High-quality leaves earned premium prices.** Burley from one acre which Allen sprayed *twice* sold for \$1.84 per pound, with most bales grading 1. Burley from 3.5 acres sprayed *once* brought \$1.80 per pound. These bales graded 1 or 2. Tobacco buyers are insisting on high grades. Many are refusing contracts unless the grower has a *record of delivering quality!*

2. **Outstanding yield.** In this area, a 2,000-lb. per acre burley yield is considered good. The tobacco which Allen treated twice yielded around 3,000 pounds. Tobacco he treated just once yielded around 2,300 pounds.

3. **There was virtually no disease,** though Allen didn't fumigate soil. Insect pressure was light, indicating a healthier plant with a strong immune system.

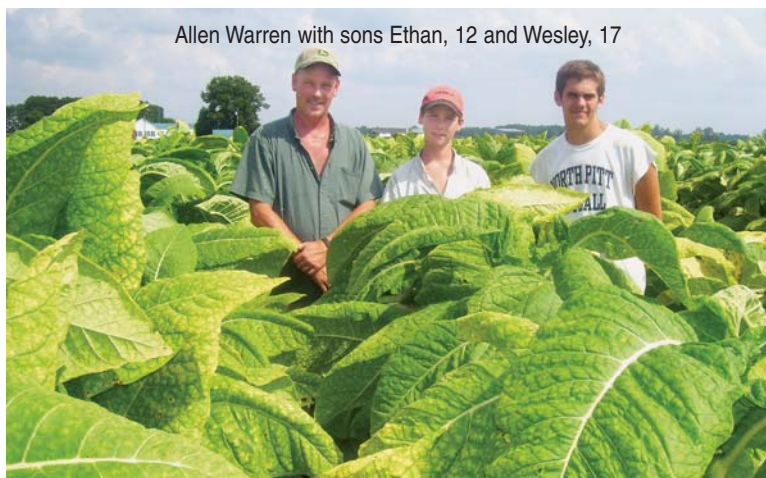
Final tobacco sales were just over \$5,000 per acre. As a result of his experience, Allen Warren has become a regional distributor of our formulation for tobacco.

Cold weather in Fall 2009 revealed another benefit of Atomic Grow: *Frost protection.* In mid-October 2009,

Barry Newsome of Farmington, KY heard a forecast low of 29°F the night of Oct. 17. He called for an immediate delivery of Atomic Grow on his tobacco, and sprayed just ahead of the cold night. Freezing temps lasted six hours overnight on Oct. 17. Ice formed on the leaves of his tobacco, but the crop had no injury. Nearby tobacco fields had substantial freeze damage.

Flue-cured tobacco growers using Atomic Grow have seen yield gains up to 50%, plus better-curing tobacco that grades higher.

Mark Smitherman of East Bend, NC says Atomic Grow produces high-quality flue-cured leaf: "You can smell the healthier aroma," he says.



New help for your fight against resistant weeds!

Soybeans sprayed with glyphosate plus Atomic Grow: No resistant weed escapes

Soybeans sprayed with glyphosate alone: Many resistant pigweeds will go to seed

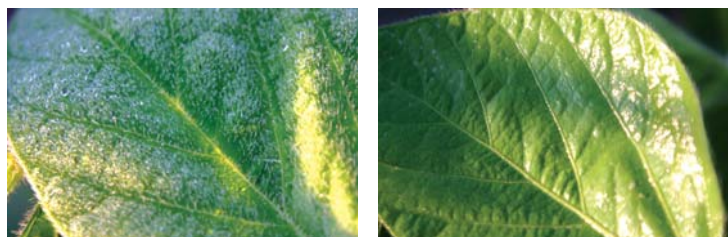
Soybeans on both sides of this lane had the same weed pressure in spring 2009: Palmer Amaranth was a problem. Both sides were sprayed with a labeled rate of glyphosate when soybeans were about V3. But before spraying the field on the left, the spray operator added Atomic Grow to the tank mix. In the field on the right, resistant Palmer Amaranth (pigweed) grew above the canopy and made seed after surviving glyphosate alone. When the farmer told us about this side-by-side comparison, we photographed what happened here.

Farmers who mixed Atomic Grow “nano-surfactant” with 41% generic glyphosate in 2007 through 2009 tell us this mix did a visibly better job of controlling glyphosate-resistant weeds like: Palmer Amaranth, Pigweed, Milkweed, Lambsquarter, Marestalk, Sicklepod, Waterhemp, Morning Glory, Coffee Bean, Tropical Spiderwort, Carelessweed, Canadian Thistle, Teaweed, Velvetleaf, and Giant Ragweed.

1 Helps herbicide and foliar fertilizer penetrate leaves in water solution. When tank-mixed with herbicides, Atomic Grow “chelates” or bonds with the chemicals, increasing absorption into plant leaves.

2 Spreads water and spray materials smoothly in close contact with leaves for rapid absorption. Plant scientists tell us Atomic Grow softens the leaf’s waxy cuticle, allowing spray solutions to directly enter the leaf palisade cells. By sharply reducing water’s surface tension, “nano-sized” colloids move immediately into xylem and phloem tubules.

3 Speeds translocation of natural plant nutrients between leaves and roots, just as it helps overcome sluggish internal movement of glyphosate in resistant weeds. The plant solution is “wetter.” When Atomic Grow is sprayed on beans at the V2 stage, the beans quickly translocate sugars and other nutrients to roots. The roots respond with vigorous growth.



“Nanotech” Atomic Grow colloids, about the size of water molecules, disperse surface dew and penetrate directly into the leaf, carrying tank-mixed chemicals into plant circulation. This dew-covered soybean leaf was photographed just before spraying, then again a few seconds after spraying. A few minutes later, the water and Atomic Grow had been absorbed and the leaf was dry. You can test this yourself with a spray bottle and 1 oz. of Atomic Grow in 2 gal. of water.

Reports from farmers on beating resistant weeds

We don’t claim Atomic Grow is a 100% answer for controlling resistant weeds. It will take a diverse approach including cultivation, rotations and varied herbicides. But until farmers can develop those strategies, they tell us that 8 oz. per acre of Atomic Grow in a spray solution “heats up” effectiveness of herbicides. Here are some typical farmer observations from the 2009 season:

Leo Perfect of Unadilla, GA: “After I applied glyphosate with and without Atomic Grow, I could go right to the row and see where almost all kinds of Pigweed had dropped, compared with where I didn’t put Atomic Grow in the spray mix.

“And in the past I’ve usually had to spray twice to kill volunteer peanuts in soybeans. The Atomic Grow-glyphosate mix killed all volunteer peanuts fast — on the first trip.”

Chuck Warner of Lebanon, KS applied 16 oz. of generic glyphosate and 8 oz. of Atomic grow per acre as a preplant burn-down when weeds were about 5 in. high. He said: “We saw a 48-hour browning of grasses and Shattercane. My custom applicator could hardly believe how fast it worked.”

Tim Disher of Lewisville, NC reported: “When we spiked glyphosate with 8 oz. of Atomic Grow per acre and sprayed early spring weeds in cool weather, we saw a quick kill, like we do on small weeds in warm summer weather. I’ve found that 17 oz. of glyphosate plus 8 oz. of Atomic Grow controls Sicklepod and glyphosate-resistant Lambsquarters.”

Jared Lane farms near Meigs, GA. He says: “Normally I spray soybeans with Roundup three times. This year, I added 8 oz. per acre of Atomic Grow with Roundup for the first application, and didn’t have to spray again. And my soybeans are so green and vigorous they look almost black. We have all kinds of Pigweed here, including the resistant ones. And we have tropical spiderwort — the label rate for that is five quarts. I burned it back with 22 oz. of Roundup with 8 oz. of Atomic Grow.”

Brian McClarren farms near Delta, OH: “Glyphosate plus 8 oz. of Atomic Grow killed Marestalk in three days.”